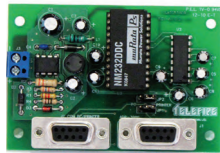


LON-7000 NETWORK COMMUNICATION MODULE

Allows the networking of as many as 32 ADR-3000 control panels, expanding the capacity of the ADR-3000 beyond 508 addresses. Each control panel can be respond to alarm and trouble events that occurred in other control panels.



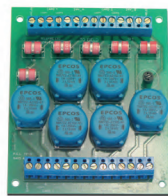
GIM-232 GALVANIC ISOLATION MODULE FOR RS-232 INTERFACE

The GIM-232 Galvanic Isolation Module allows connection of grounded serial devices as a PC or a serial printer to the ADR-3000 without ground fault disturbance.



TPS-34A EXTERNAL POWER SUPPLY

An external power supply that includes a 24Vdc 4A power supply, battery charger, and a control circuit that monitors the TPS-34A and reports status and trouble information to the control panel.



EPI-3000 ELECTROMAGNETIC AND SURGE PROTECTION INTERFACE MODULE

The EPI-3000 isolates the SLC loops and 24Vdc outputs from electromagnetic interference. One EPI-3000 module will isolate all four loops, and both 24Vdc outputs of a single control panel.



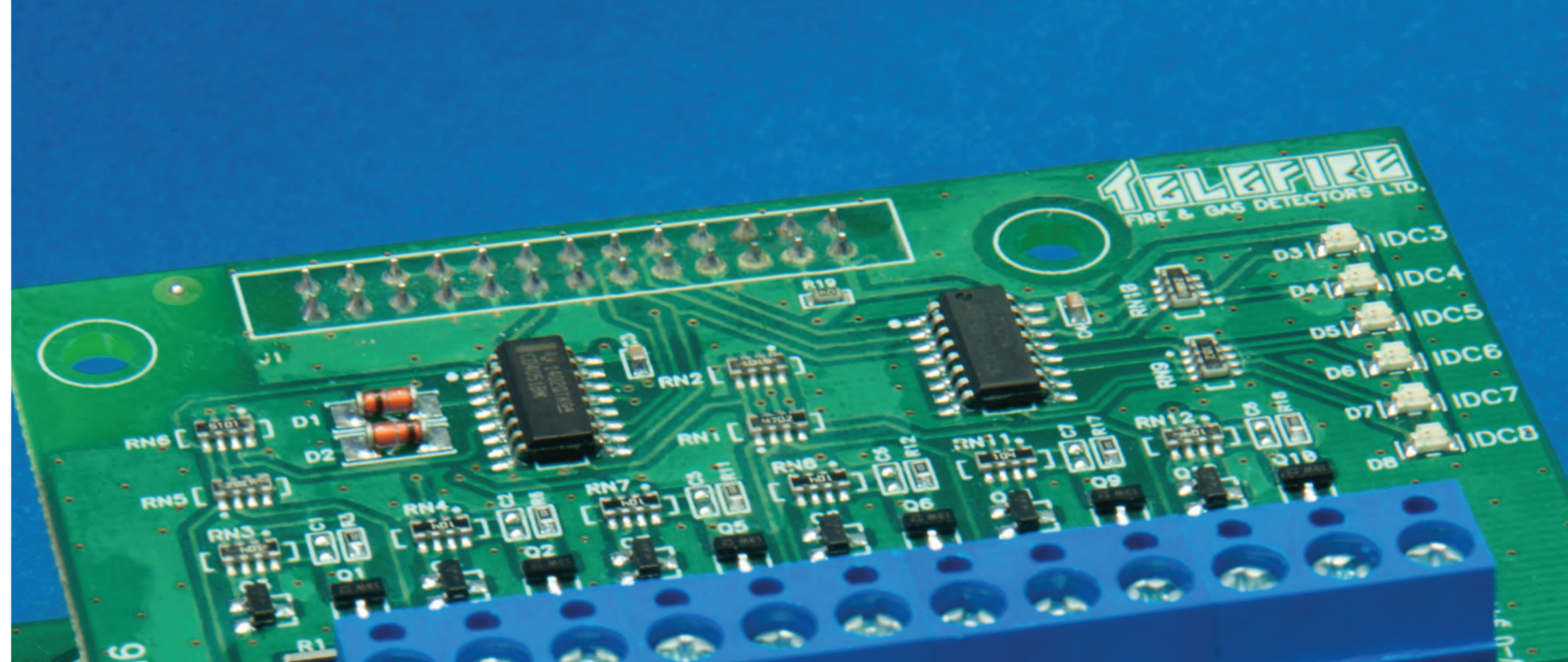
TDM-500i TELEPHONE DIALER AND ANNUNCIATOR

Used with fire alarm or other security systems for dialing and transmitting a pre-recorded verbal message to emergency services.



PROG-4000 ANALOG ADDRESSABLE DETECTOR AND ACCESSORY PROGRAMMER

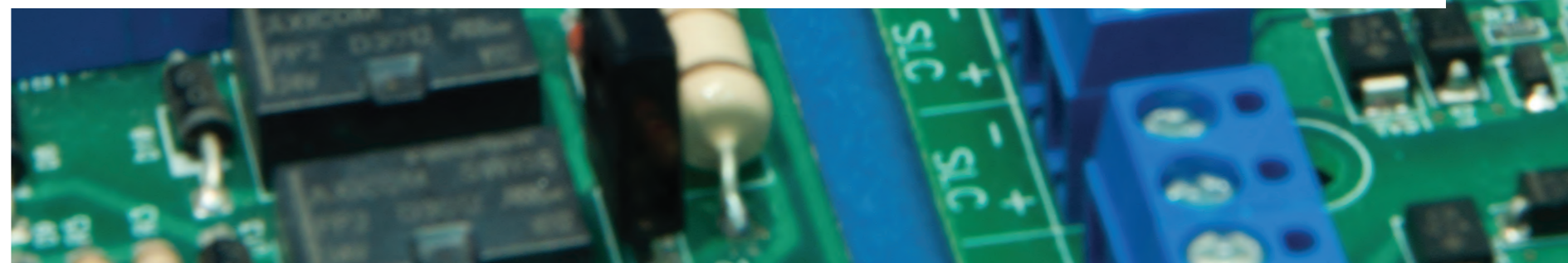
The PROG-4000 Analog Addressable Detector and Accessory Programmer is a tool for programming and testing all Telefire's analog addressable devices. These tests include verification of features and conditions of the tested device such as normal operation, alarm, various trouble conditions, etc.



ACCESSORIES

For Conventional and Analog Addressable Fire Alarm Systems

- Remote Panel for Control and Supervision
- Automatic Extinguishing Control Unit
- Input Modules - Single and Multi-Channel
- Output Modules for Device Activation
- Telephone Dialer and Annunciator
- Remote Signaling Indicator



Accessories



RM-4005 REMOTE PANEL

Enables control and supervision of the analog addressable control panel from remote location and key positions. The panel includes a clear, backlit 4 lines by 40 characters LCD display, keyboard, internal buzzer, an alarm output, trouble output, and interface relay that reduces the need for additional output interface module.

Up to 16 RM-4005 can be connected (by RS-485) to each control panel.



ADR-833 AUTOMATIC EXTINGUISHING CONTROL UNIT

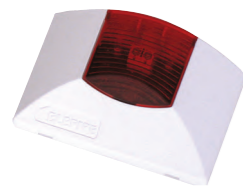
Supervised by an analog addressable control panel, the ADR-833 is a multi input / output relays control unit that supervises, controls and activates automatic extinguishing systems.

The ADR-833 occupies only one address although it has several inputs and outputs.



BREAK-GLASS CALL POINTS

- TPB-10R Conventional Manual Fire Alarm Call Point – Indoor (red)
- TPB-800ASY Analog Addressable Manual Extinguishing Call Point – Indoor (yellow)
- TPB-800ASR Analog Addressable Manual Fire Alarm Call Point – Indoor (red)
- TPB-10B Conventional Manual Extinguishing Abort Switch – Indoor (blue)
- TPB-10Y Conventional Manual Extinguishing Call Point – Indoor (yellow)



TFL-1N / TFL-1NA REMOTE SIGNALING INDICATOR

Enables auxiliary for smoke detectors that are located in closed (i.e. not visible) spaces, such as above false ceilings, or in closed rooms, etc.

- TFL-1N is used in conventional systems
- TFL-1AN is used in analog addressable control systems



TFS-214S

The TFS-214S sounder strobes are intended for use as indoor sounder/ strobes and can be configured by an onboard switch for 32 standard sounds.

The TFS-214S has a separate inputs for the sounder and the strobe



TIP-224/TIP-224A CONVENTIONAL/ANALOG ADDRESSABLE INDOOR ALARM NOTIFICATION SOUNDER

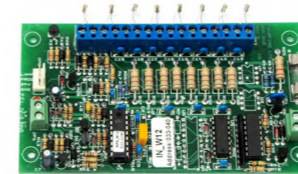
- The TIP-224 is connected to the Notification Appliance Circuit (NAC) of conventional and analog addressable systems.
- The TIP-224A is used as an addressable sounder on analog addressable systems, saving the need for an output module.



ADR-812 TWO CHANNEL INPUT MODULE

Interfaces two supervised non-addressable input device interfaces (IDC) with an analog addressable system. These devices can be conventional smoke, heat beam, or gas detectors and water flow switches.

The ADR-812 occupies one- or two consecutive addresses.



ADR-818 EIGHT CHANNEL INPUT MODULE

Interfaces 8 supervised non-addressable input lines to be connected to smoke detectors and water flow switches.

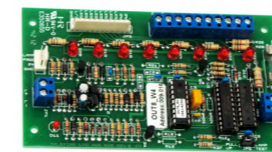
The ADR-818 occupies eight consecutive addresses.



ADR-823 THREE CHANNEL INPUT MODULE

Three channel input / output analog control module that includes two output circuits (NAC – Notification Appliance Circuit) and single input circuit (IDC – Initiating Device Circuit). For use in situation where there is a need for multiple output and input modules to carry out supervisory, alarm, and automatic extinguishing functions.

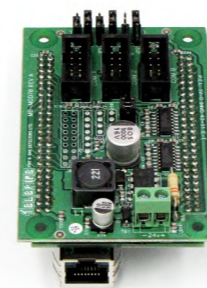
The ADR-823 occupies one- or two or three consecutive addresses



ADR-828 EIGHT CHANNEL OUTPUT MODULE

Enables the activation of 8 unsupervised outputs for auxiliary indicators only. Used in synoptic panels, indication lights, direction signs, relay etc.

The ADR-828 occupies eight consecutive addresses.



INTERNET ENABLED MONITORING AND NOTIFICATION MODULES

Telefire's Internet Enabled Monitoring and Notification Modules provide fire alarm control panel monitoring over LAN, WAN, or internet, using a standard web browser and distributes alarm and trouble events via a built-in web server, e-mail notifications and SMS paging.

- The NET-3000 is compatible with the ADR-3000 Analog Addressable Alarm Control Panel
- The NET-1000 is compatible with the TSA-1000 Conventional Multi-zone Alarm Control Panel
- The NET-200 is compatible with the TSA-200 Conventional Two Zone Alarm Control Panel



LI-3000 LINE ISOLATION MODULE

Provides the SLC loop with advanced capability of protection from fault conditions such as short- and open circuit, enabling continuous operation of the loop by isolating the faulty section from the rest of the loop.

The LI-3000 enables wiring the SLC loop in a closed loop (Class A) as well as branching T-shaped (Class B) wiring configuration. As many as 20 LI-3000 modules can be installed in each SLC loop.